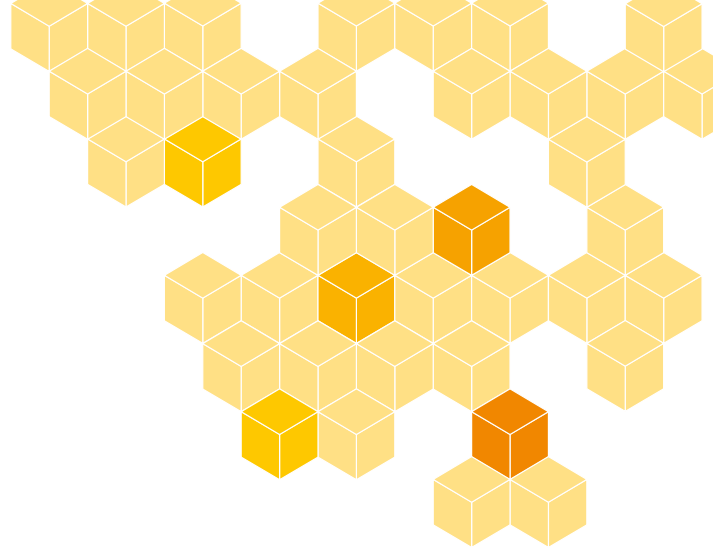




# What to Expect from a Modern Data Analysis Platform

---

The essential guide to unlocking  
smarter, faster, AI-powered  
insights across your business



# Executive Summary

Data is one of the most valuable assets any organization holds. Yet for many businesses, that data remains trapped in disconnected systems, difficult-to-use tools, and reports that arrive too late to support timely decisions.

Traditional business intelligence platforms were built for another era. They rely heavily on manual effort, serve only a small group of technical users, and struggle to keep up with the pace and complexity of modern business. This limits agility, slows decision-making, and leaves much of the organization working in the dark.

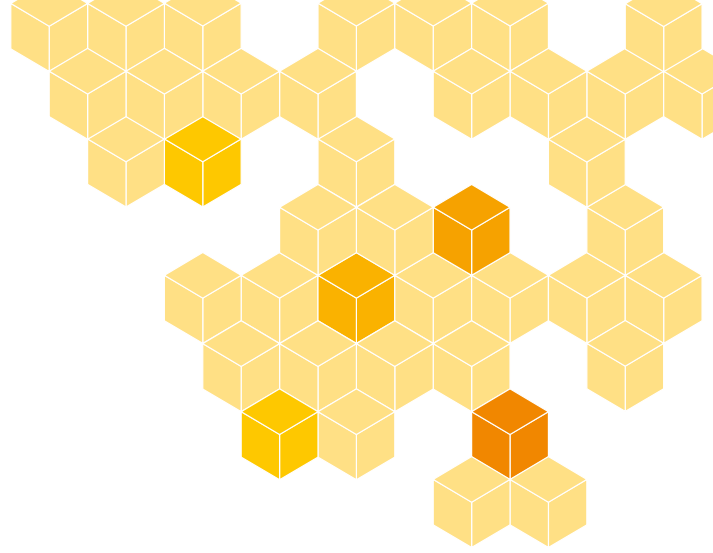
This ebook introduces the key capabilities that define a modern generation data analysis platform. These platforms are designed to unify systems, apply artificial intelligence from end to end, and make insights available to everyone across the business, not just analysts or IT professionals.

Inside, we explore how ten key capabilities of a modern data platform can transform the way you work with data. From connecting seamlessly to all your critical data sources to enabling unlimited data exploration through AI-assisted drilldowns and pivots, each capability is designed to reduce complexity, speed up insight, and put the power of data into the hands of your entire organization.

Unlike traditional approaches, modern data platforms remove the need for complex and expensive data warehouse projects. They connect directly to your systems, handle integration and transformation automatically, and allow your teams to access live, accurate data without waiting for IT or engineering support.

The modern approach changes the model entirely. Instead of working for the data, the data works for you. Information flows automatically. Answers come instantly. Insights are delivered to the people who need them, when they need them, so everyone can contribute to smarter, faster decisions.

If your current tools are holding you back, this guide will help you understand what is possible, what has changed, and how to move toward a more intelligent and connected way of working with data.



# Top 10 Things a Modern Data Platform Should Do

In today's business landscape, data is arguably your most valuable asset. But for many organizations, that data is trapped, spread across multiple systems, locked inside hard-to-navigate tools, or buried in reports that arrive too late to act on.

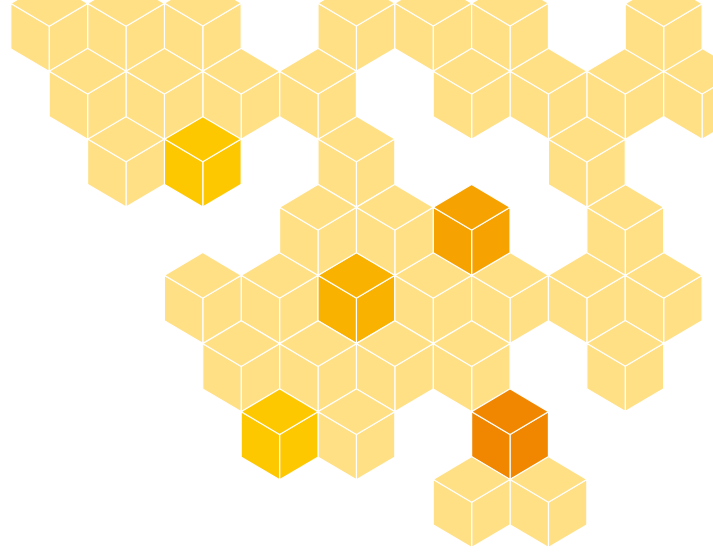
The gap between what's possible and what's practical has grown too wide.

Traditional business intelligence (BI) tools were built for a different era. They're often technical, time-consuming to maintain, and designed primarily for analysts or IT departments. Meanwhile, the people who need insights most, decision-makers across finance, sales, operations, and beyond, are left waiting.

In many businesses, the ability to work with data is still in the hands of a few. This creates bottlenecks, slows decision-making, and undermines agility. Teams are forced to rely on analysts or request custom reports to get even basic answers. As a result, the business loses momentum, and opportunities slip through the cracks.

A modern data platform must break this pattern. It needs to enable data democracy, giving every person in the business access to the information they need, when they need it. When insights are no longer siloed, everyone can contribute to decision-making. This accelerates the pace at which the business operates and ensures decisions are grounded in data, not guesswork.

**That's why the world is shifting toward a new kind of platform, one that puts AI, automation, and accessibility at its core.**



# Top 10 Things a Modern Data Platform Should Do

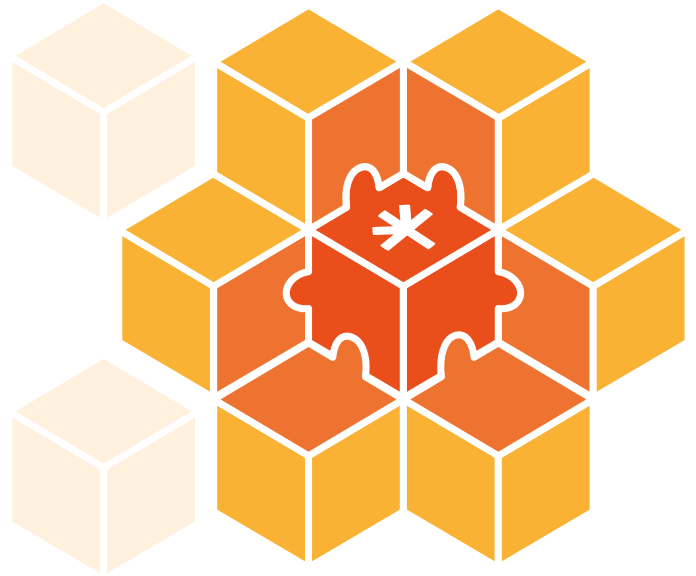
If you're assessing your current tools or planning for the future, there are 10 key capabilities that define what a modern data platform must deliver. These aren't just features, they're foundational shifts in how data is used, accessed, and valued inside modern organizations.

***A modern data platform should change the way you work with data by:***

- 1 Connecting seamlessly to all your critical data sources
- 2 Understanding the structure and logic of the systems it integrates with
- 3 Using AI throughout the entire data journey, from ingestion to insight
- 4 Offering prebuilt, configurable business apps that deliver instant value
- 5 Enabling business users to ask questions in natural language
- 6 Allowing you to start small and expand modularly as your needs grow
- 7 Streaming data and insights out to other apps and tools in your ecosystem
- 8 Learning how your business operates and adapt over time
- 9 Meeting all the diverse needs of every role in your organization
- 10 Enabling unlimited data exploration with AI-assisted drilldowns and pivots

In the pages that follow, we'll walk through each of these in detail. You'll learn how they work, why they matter, and what to look for when evaluating modern data platforms.

Whether you're upgrading from legacy BI tools or just beginning your data transformation journey, this guide will help you understand what's possible, and how to move your organization toward smarter, faster, AI-powered decisions.



1

# Native Integration with Multiple Data Sources

## **What It Is**

A modern data platform connects directly to all your core data sources. This includes on-premise systems like JD Edwards, cloud-based applications such as Salesforce, spreadsheets, databases, and even APIs. Integration happens in real time and is automated, eliminating the need for manual data extraction or uploads.

## **Why You Need It**

When data is spread across disconnected systems, reporting becomes slow, manual, and unreliable. Teams often struggle to reconcile numbers or piece together a complete view of performance. A truly integrated platform brings all your data together into a unified environment, allowing teams to work from one source of truth and make faster, more accurate decisions.

## **How eyko Delivers It**

**eyko** provides native connectivity to dozens of enterprise applications and data formats. Whether your data sits in JD Edwards, Oracle, Salesforce, NetSuite, or a CSV file, eyko connects quickly and securely. There is no need for a data warehouse or lengthy integration project. The result is live, accurate data from across your business, available in one place and ready to use.



2

# Built-In Application Intelligence

## *What It Is*

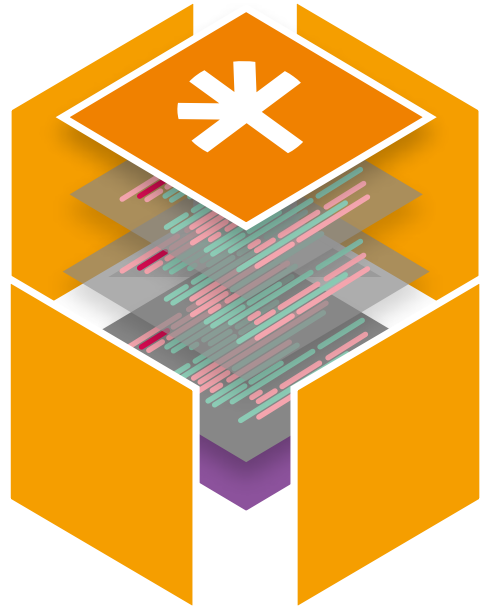
Application Intelligence means the platform does more than just extract data. It understands the systems it connects to. It recognises how different business applications structure their data, what fields mean, and how tables relate. It also presents this data in business-friendly terms that are easy to navigate and analyze.

## *Why You Need It*

Without this kind of intelligence, you are left with a long list of cryptic field names and raw tables. Setting up reporting becomes slow and technical. Mistakes are easy to make and difficult to catch. A platform with inbuilt application intelligence removes these barriers. It translates raw system data into something useful and usable, right out of the box.

## *How eyko Delivers It*

**eyko's** Application Intelligence layer is preconfigured to understand the logic, structure, and naming conventions of complex systems like JD Edwards, Oracle, and Salesforce. When you connect a system, eyko automatically renames fields into business terms and builds the correct table relationships. You can explore your data without needing to decode technical field names or map anything manually.



3

# AI-First Design: Intelligence at Every Layer

## **What It Is**

An AI-first platform is built with artificial intelligence embedded at every layer. AI is used to clean and classify data as it enters the system. It supports analysis by identifying patterns, anomalies, and trends. It also powers user interaction, enabling people to ask questions in plain English and get immediate answers.

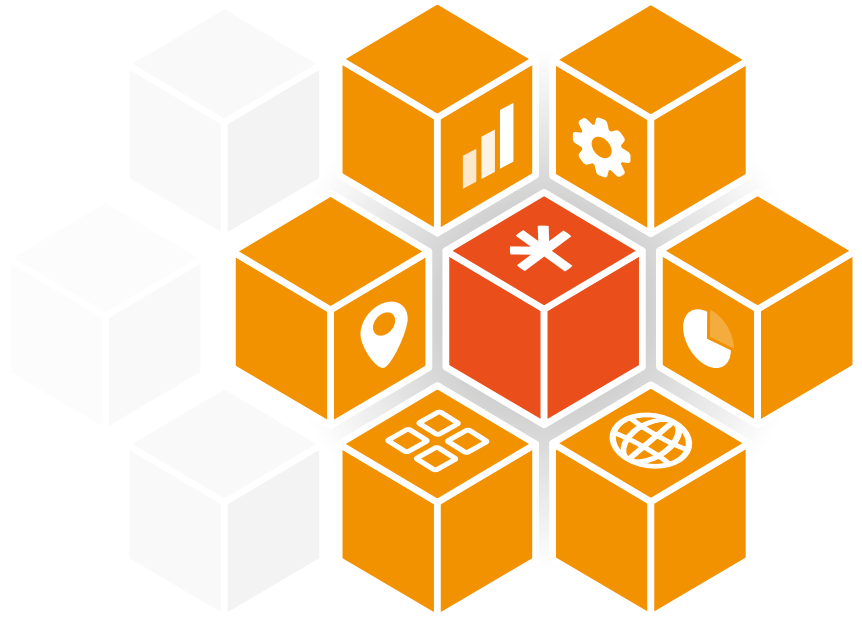
## **Why You Need It**

Most businesses no longer have the luxury of time when it comes to analysis. The volume of data is increasing, and traditional methods can't keep up. AI helps your business move faster by spotting issues early, surfacing insights automatically, and enabling everyone to get the answers they need without writing queries or building dashboards.

## **How eyko Delivers It**

**eyko** applies AI throughout the entire data lifecycle. It assists with classification and mapping during ingestion. It provides automated insight generation, from trend analysis to anomaly detection. And with eyko Assist, users can simply type a question like "Why did revenue drop last month?" and receive a direct, accurate answer based on the data. There is no waiting, no technical barrier, and no extra work.

# 4



## Prebuilt AI Business Apps

### **What It Is**

Prebuilt business apps are ready-made modules for specific roles or departments, such as finance, sales, procurement, or operations. These apps include dashboards, metrics, and analysis tools that are designed to answer real business questions. They are configurable, meaning you can tailor them to your data and needs without starting from scratch.

### **Why You Need It**

Traditional BI projects often begin with a blank slate, requiring significant time and effort to define, design, and build dashboards. This can take months and delay the delivery of insight. Prebuilt apps accelerate time to value. They provide immediate access to relevant metrics and let teams take action quickly, without needing deep technical expertise or development resources.

### **How eyko Delivers It**

**eyko** includes a library of AI-powered business apps that are designed around the most common challenges faced by teams in finance, sales, and operations. These apps come with preconfigured dashboards and KPIs and can be deployed in less than 24 hours. This gives your team instant insight, so they can start exploring their data and making informed decisions right away

# 5



## Conversational BI for Everyone

### **What It Is**

Conversational BI allows users to interact with data using natural language. Instead of navigating complex menus or writing queries, users can simply ask a question such as “What were our top five products by revenue last quarter?” and get an immediate, accurate answer.

### **Why You Need It**

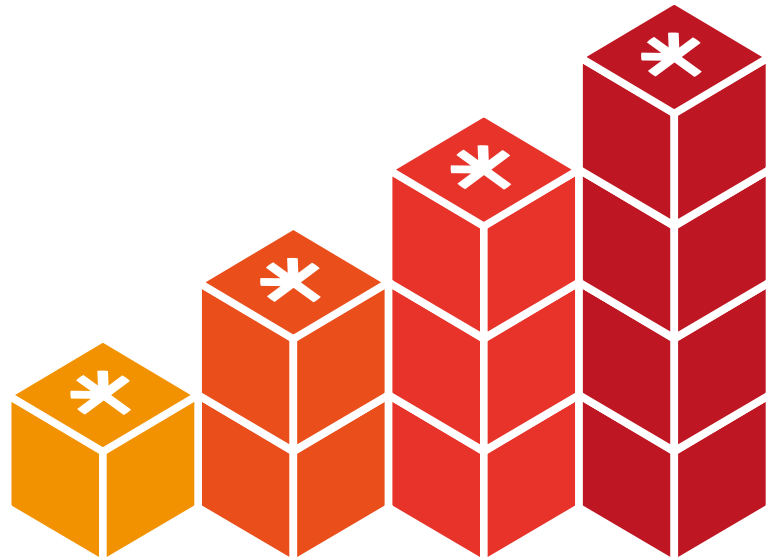
Many business users are locked out of data because they lack technical skills or access to reporting tools. This slows down decision-making and increases dependency on analysts. With a conversational interface, anyone in the business can explore data and find answers on their own. This increases access, reduces bottlenecks, and encourages a culture of data-driven thinking.

### **How eyko Delivers It**

eyko includes eyko Assist, an AI-powered assistant that understands plain English questions and returns relevant data instantly. It works across all your connected systems and gives clear, contextual

answers. There is no training required, no special syntax, and no need to wait for a report to be built. Just type the question and get the answer.

6



# Modular, Scalable Rollout

## **What It Is**

A modular platform allows you to start with a single use case or department and expand over time. You are not required to implement everything at once. You can grow at your own pace, adding new users, data sources, or business apps as needed.

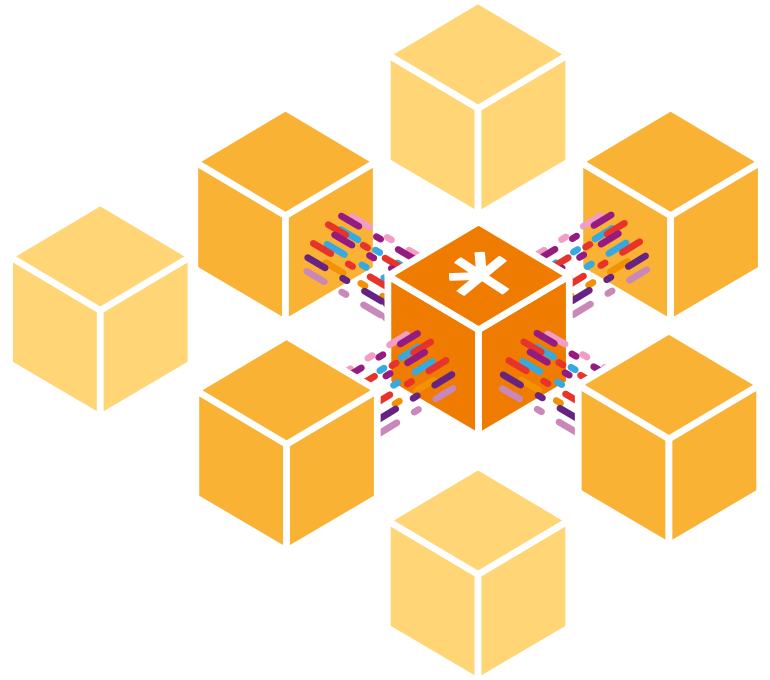
## **Why You Need It**

Large-scale BI projects can be expensive, risky, and slow to deliver value. A modular approach gives you flexibility. It reduces risk, allows for quick wins, and lets the platform grow with your business. This ensures adoption, avoids overwhelming users, and improves return on investment.

## **How eyko Delivers It**

eyko is designed to be modular from the ground up. You can begin with a focused project such as cash flow analysis or supplier reporting. Once you see results, you can roll out additional business apps, add new data sources, and scale across teams. There is no disruption and no need to replace existing systems. eyko works alongside what you already have.

# 7



## Streams Data to Other Systems

### *What It Is*

Bi-directional streaming means that a platform can not only pull data in for analysis, but also push enriched data or insights back out to other systems. This includes feeding dashboards, updating planning tools, or triggering workflows in other business applications.

### *Why You Need It*

Insights should not stay trapped inside a dashboard. They need to flow into the systems where decisions are made and actions are taken. Whether it is pushing a forecast to your finance system or sending an alert to your CRM, bi-directional streaming allows data to become truly operational.

### *How eyko Delivers It*

**eyko** supports real-time data streaming in and out of the platform. You can push forecasts, metrics, or model outputs into your planning, marketing, or sales platforms. **eyko** can also trigger alerts or feed other tools with the insights it uncovers, keeping your ecosystem connected and your teams aligned.



# Learns Your Business Over Time

## **What It Is**

A platform that learns over time uses machine learning to understand your business patterns, behaviours, and trends. It builds a model of what is normal and flags what is not. It adapts based on real usage, outcomes, and feedback.

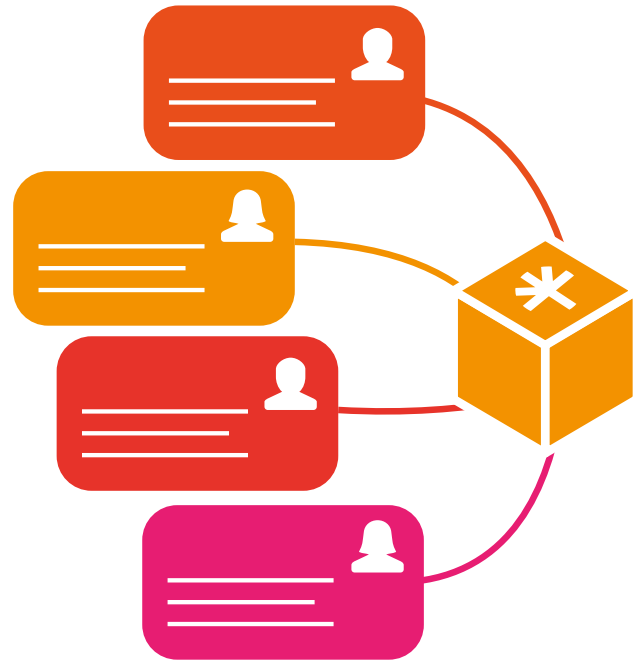
## **Why You Need It**

Static reports are limited to what you already know to look for. A platform that learns can surface unexpected issues or opportunities. It becomes more accurate, more relevant, and more valuable the longer you use it. This continuous improvement helps your team stay ahead of risk and identify trends before they impact performance.

## **How eyko Delivers It**

**eyko** uses adaptive learning to monitor your data over time. It learns what typical performance looks like and flags deviations. It recognises seasonal patterns, supplier behaviour, and customer trends. The more you use eyko, the more tailored its recommendations become. It shifts from being a reporting tool to becoming a proactive advisor for your business.

# 9



## Built for Every Role in the Organization

### **What It Is**

A modern platform should work for every role, not just data analysts or IT professionals. Whether you are a CFO, a supply chain manager, or a sales leader, the platform should present the right information in the right format for your needs.

### **Why You Need It**

If data is only accessible to a few technical users, most of your organization is left out of the conversation. This creates bottlenecks and slows decision-making. When insights are accessible to everyone, each person can contribute to outcomes and operate with confidence. It also improves collaboration and trust across teams.

### **How eyko Delivers It**

**eyko** is built for the business, not just the back office. It delivers tailored insights for every function, with intuitive dashboards and natural language querying. Executives get high-level overviews, while team leads get focused operational views. Everyone can access the data they need without being an expert in BI tools or SQL.

10



# Unlimited Exploration with AI-Driven Drilldowns

## **What It Is**

Unlimited exploration means that users can investigate their data freely without needing to build a new report every time. You can pivot by time, product, customer, or geography. You can drill into transactions or ask follow-up questions on the fly.

## **Why You Need It**

Rigid dashboards limit curiosity. If a number looks wrong or an opportunity emerges, you need the ability to investigate quickly. Traditional BI tools often require new reports or queries for each question, which slows down insight and delays action. A modern platform gives users the power to explore without limits.

## **How eyko Delivers It**

**eyko** provides dynamic exploration tools that allow users to pivot, filter, and drill into their data in real time. Powered by AI, eyko automatically understands your follow-up questions and gives you contextual answers. There is no need to submit a ticket or wait for a dashboard to be built. You can follow your curiosity wherever it leads and find the answers you need on your own.

# Conclusion: Why This Matters More Than Ever

Business today moves fast. Markets shift quickly. Customer expectations are rising. Leaders are under pressure to make smart, timely decisions based on real insight.

But many organizations are still relying on tools and processes that were designed for a slower, simpler world. Traditional platforms require too many manual steps, too many disconnected systems, and too much reliance on specialists. This creates friction, delays, and missed opportunities.

Modern data platforms remove these barriers. They bring data together, apply intelligence automatically, and make insights accessible to everyone in the business.

This is not just an upgrade in technology. It is a fundamental shift in how businesses operate. Whether we like it or not, the reality is clear, every company is now a data company. Competitive advantage increasingly depends on how effectively you use information, not just how much of it you have.

In the past, your teams worked for the data. Reports were manually created, systems were stitched together, and every new question required a new round of effort. The process was slow, resource-heavy, and frustrating.

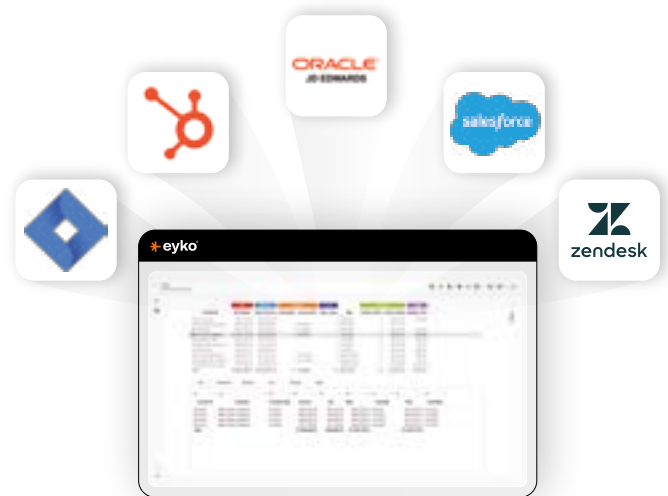
A modern approach turns that model on its head. Now the data works for you. It flows automatically. It answers questions instantly. It learns from your business and delivers insights proactively. Everyone can access what they need, when they need it, and contribute to smarter, faster decisions.

This shift does more than improve reporting. It transforms how your business thinks, plans, and grows.

**If your current tools are slowing you down, now is the time to move forward. Platforms like eyko are designed for the way modern businesses operate. They are connected, intelligent, and built for speed.**

**If you're ready to unlock the full potential of your data, and empower every person in your business to make better decisions, then it's time to move forward. Not tomorrow. Today.**

Schedule a call



# Checklist

## Is Your Data Platform Ready for What's Next?

Use this simple checklist to compare your current solution with the capabilities of a modern, AI-powered data platform. Score each row and see where the gaps are.

Capability	Legacy BI Tools	Next Generation Platform	Your Current Solution
1. Native integration with key data sources	Often manual or limited	Connects in real time to ERPs, CRMs, cloud & spreadsheets	<input type="checkbox"/> Yes <input type="checkbox"/> No <input type="checkbox"/> Partial
2. Inbuilt application intelligence	Requires heavy configuration	Understands systems like JD Edwards, Oracle, Salesforce out of the box	<input type="checkbox"/> Yes <input type="checkbox"/> No <input type="checkbox"/> Partial
3. AI-first architecture	AI added on top, if at all	AI is embedded from ingestion to insight	<input type="checkbox"/> Yes <input type="checkbox"/> No <input type="checkbox"/> Partial
4. Prebuilt business apps	Long custom dev cycles	Ready-to-use apps for finance, sales, ops, etc.	<input type="checkbox"/> Yes <input type="checkbox"/> No <input type="checkbox"/> Partial
5. Conversational BI interface	Requires analysts or SQL	Any user can ask questions in natural language	<input type="checkbox"/> Yes <input type="checkbox"/> No <input type="checkbox"/> Partial
6. Modular, scalable rollout	Often requires full deployment	Start with one area, expand as needed	<input type="checkbox"/> Yes <input type="checkbox"/> No <input type="checkbox"/> Partial
7. Bi-directional data streaming	Siloed or one-way	Streams data into and out of other systems	<input type="checkbox"/> Yes <input type="checkbox"/> No <input type="checkbox"/> Partial
8. Learns your business over time	Static reports and logic	Identifies trends, adapts to your operations	<input type="checkbox"/> Yes <input type="checkbox"/> No <input type="checkbox"/> Partial
9. Serves every business role	Primarily built for analysts	Insights tailored for execs, managers, and teams	<input type="checkbox"/> Yes <input type="checkbox"/> No <input type="checkbox"/> Partial
10. Unlimited data exploration	Rigid dashboards	Flexible, AI-guided drilldowns and pivoting	<input type="checkbox"/> Yes <input type="checkbox"/> No <input type="checkbox"/> Partial

### Score Yourself

(1 point for a Yes, 1/2 point for a Partial)

**8–10 Points:** You're well on your way to being a data-first organization.

**5–7 Points:** You've made progress, but there are critical areas holding you back.

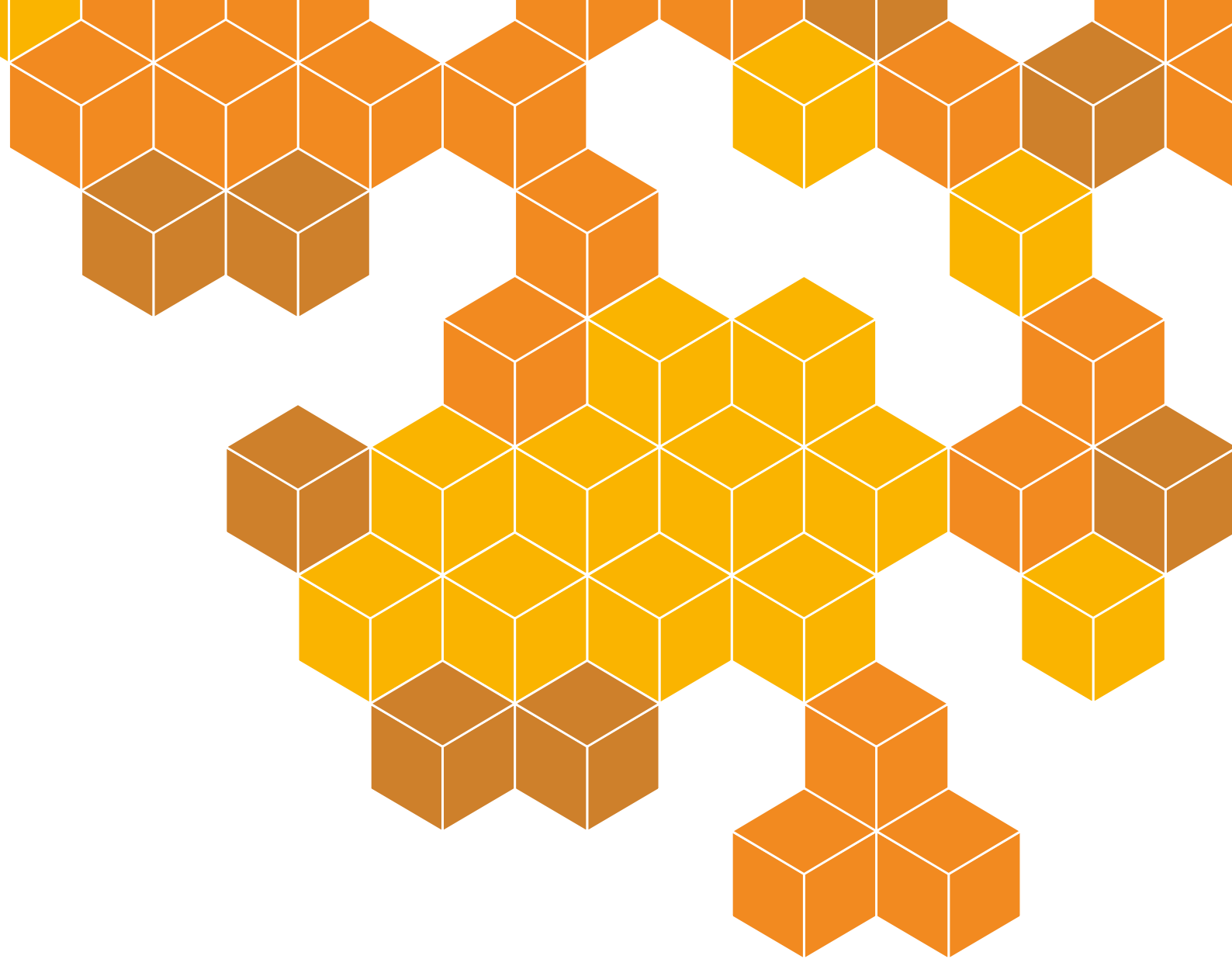
**0–4 Points:** Your current platform may be limiting your ability to make smart, fast decisions.

**Want help mapping your results to a modern solution like eyko?**

Schedule a call

**Let's schedule a walkthrough and identify where the biggest impact could be made.**





# Know more, with eyko.

A single end-to-end data analytics  
platform powered by finance.

[Find out more](#)

 **eyko**<sup>®</sup>  
know more